

MONTHLY MEMBERSHIP PROGRESS REPORT

LOCATION IOWA

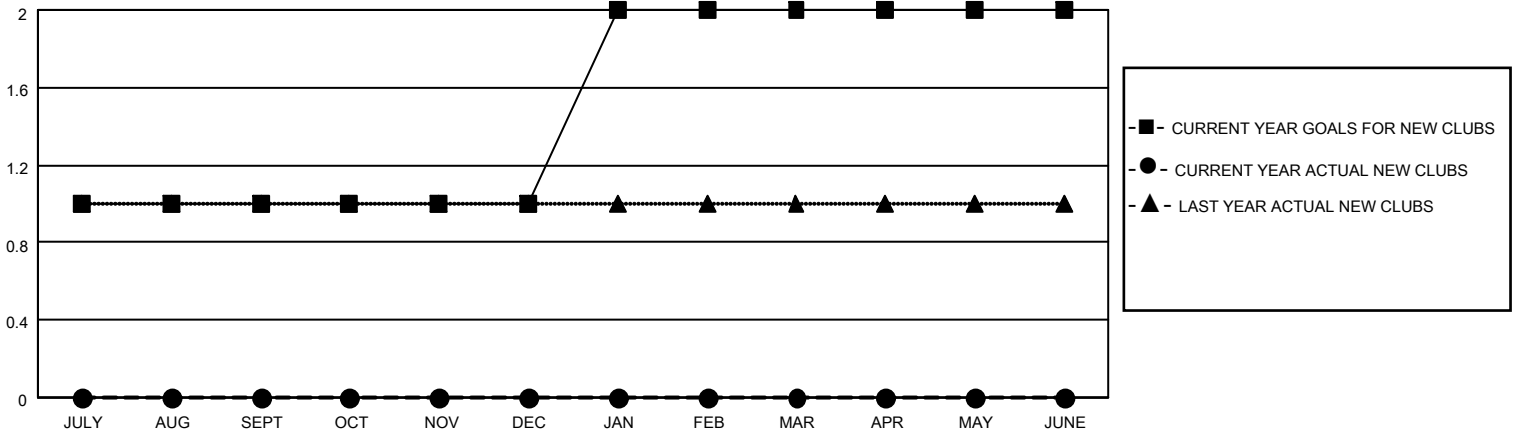
District 9 SW

Results as of: 5/31/2023

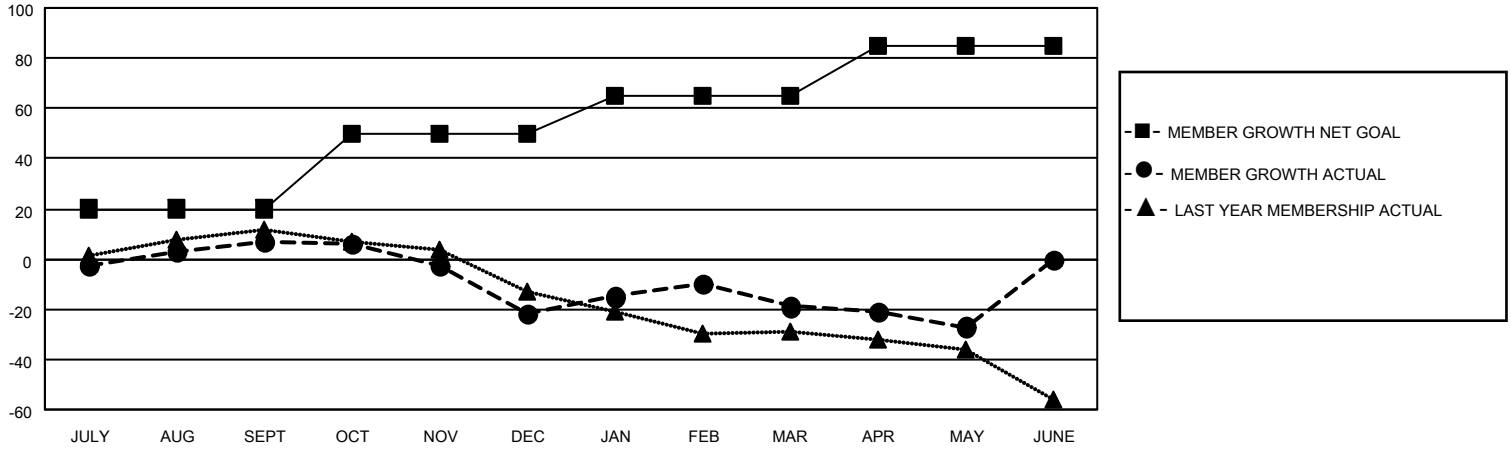
Clubs			
RESULTS FOR 2022-2023			
QUARTER	NEW CLUB GOAL	NEW CLUBS	DROPPED CLUBS
JULY/AUG/SEPT	1	0	0
OCT/NOV/DEC	0	0	0
JAN/FEB/MAR	1	0	1
APR/MAY/JUNE	0	0	1

Members			
RESULTS FOR 2022-2023			
QUARTER	MEMBER GROWTH NET GOAL	MEMBER GROWTH ACTUAL	DROPPED MEMBERS ACTUAL (including transfers)
JULY/AUG/SEPT	20	38	27
OCT/NOV/DEC	30	23	50
JAN/FEB/MAR	15	20	17
APR/MAY/JUNE	20	19	25

GOALS AND ACTUAL NEW CLUBS CUMULATIVE



GOALS AND ACTUAL MEMBERS CUMULATIVE



DROPPED CLUBS: 2

30 CLUBS OF 52 ADDED 1 OR MORE NEW MEMBERS

GENDER DISTRIBUTION

DROPPED MEMBERS

DECEASED	16
CLUB CANCELLED	0
OTHER	103
TOTAL	119

MALE	811 (65.72%)
FEMALE	423 (34.28%)
NON BINARY	0 (0.00%)
PREFER NOT TO ANSWER	0 (0.00%)

[CLICK HERE FOR CUMULATIVE MEMBERSHIP DATA](#)

TOTAL FAMILY UNIT MEMBERS	399
FAMILY MEMBERS PAYING HALF DUES	205